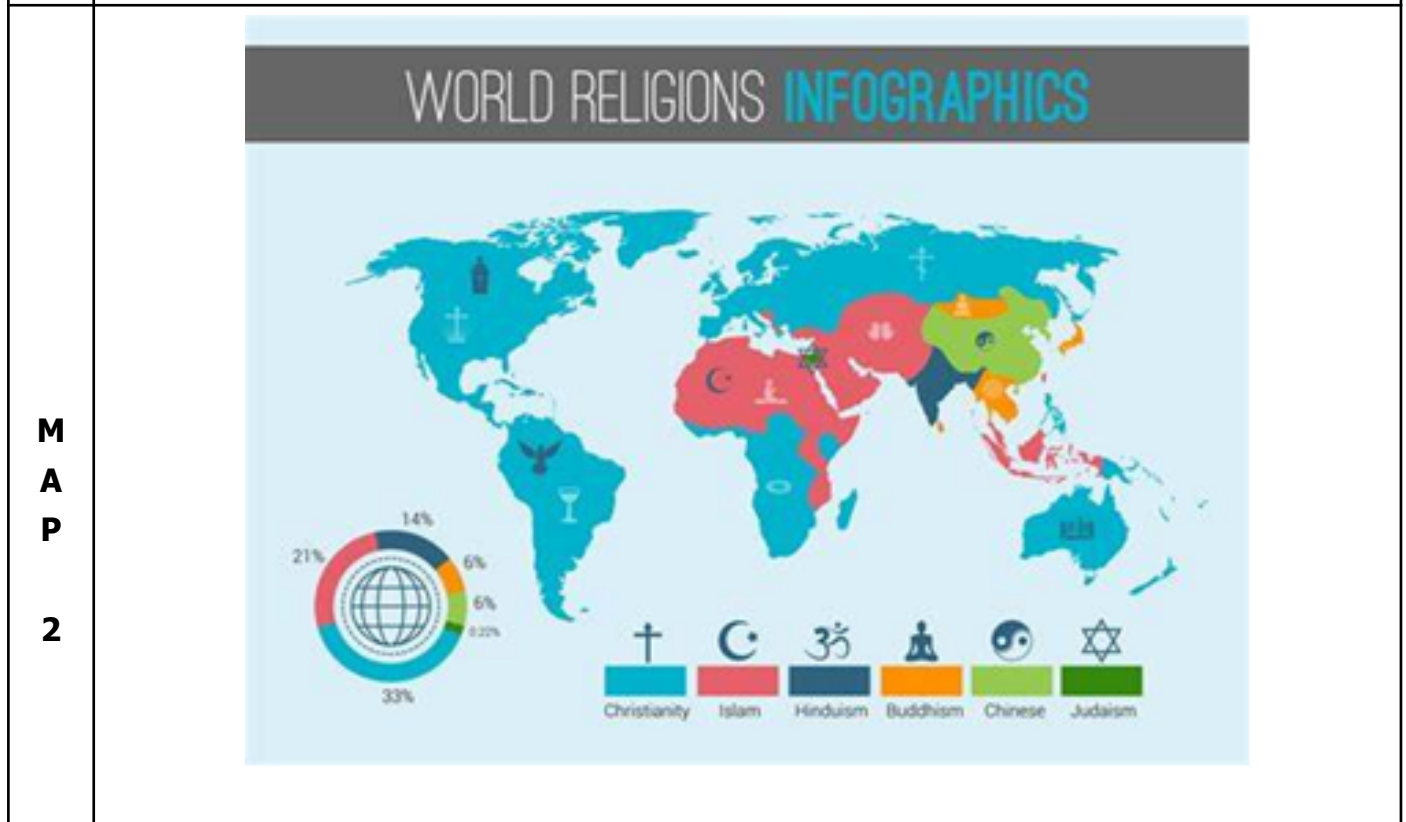
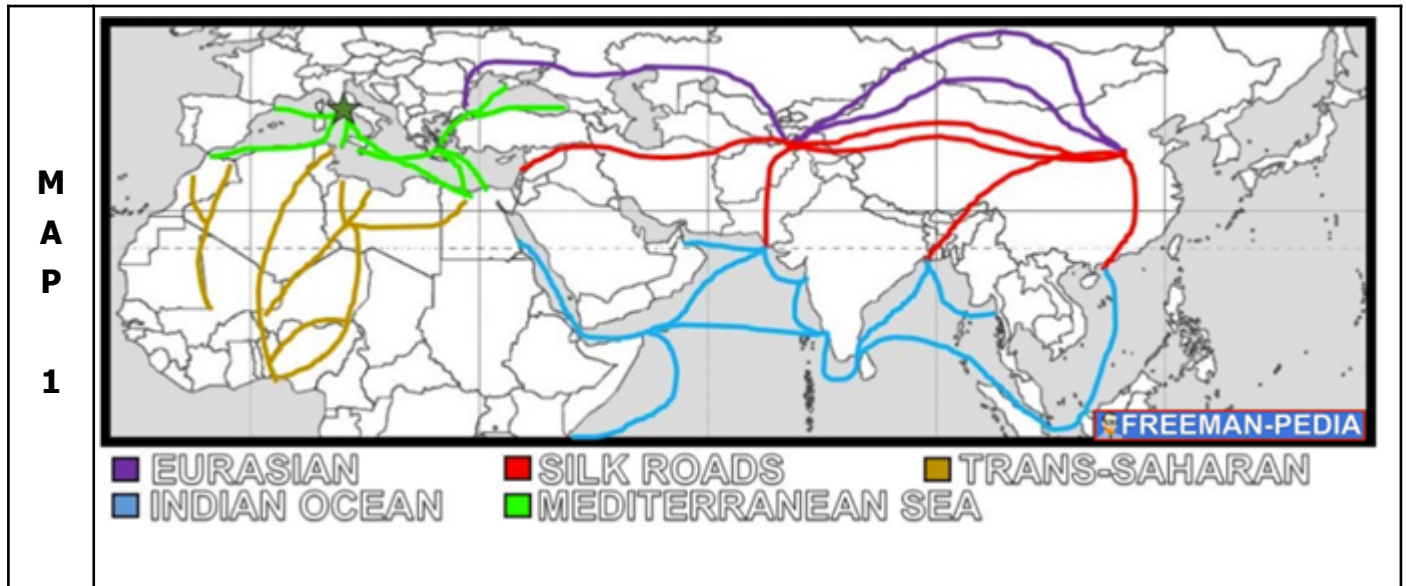


Responding to Prompts using the TEA Method

<p>What is the prompt asking?</p> <ul style="list-style-type: none"> • Read the prompt carefully. • Label the who, where, when, task, and topic. 	
<p>TOPIC (Answer)</p>	
<p>Your concise answer to the question. The rest of your response should PROVE this claim.</p>	
<p>EVIDENCE (Cite)</p>	<p>ANALYZE (Commentary/Reasoning)</p>
<p>This includes a direct quotation or a paraphrased detail from the source that PROVES your claim is correct. You need to cite your evidence.</p>	<p>You need to EXPLAIN in your own words how your evidence proves that your claim is correct. *AP should use a form of historical reasoning in this explanation.</p>
<p>Sentence Starters for introducing evidence:</p> <ul style="list-style-type: none"> • The author states that • _____ says that . . . • In (source title), the author argues/claims/explains that . . . • The author emphasizes that . . . 	<p>Sentence Starters for reasoning:</p> <ul style="list-style-type: none"> • This shows . . . • This means . . . • This reveals . . . • This expresses the idea . . . • This implies . . . • This suggests . . . • This confirms . . . • This highlights the difference between . . . • The author's point is that . . .

EXAMPLE:

Use the maps below to answer the question.



1. What regional patterns have you noticed in the maps?

The trade routes mostly have the same religion in them. For example, the yellow trade route or Trans-Saharan Network has Islam in the same area. This suggests that trade networks were important in helping spread religions to the areas.